

halcor



DTV Duo

User Manual

USB Dual DVB-T

TV Stick User's Manual

Ver. 2.0

Chapter 1 Overview

1.1 Introduction

Important Notice: “All channels are subject to coverage and may be changed from time to time. Reception may depend on the type and condition of your existing aerial. Aerial upgrade may be required. Please confirm coverage in your area.” We strongly recommend that you install an outdoors antenna when you use the DTV receiver indoors.

Note:

- 1. Terrestrial digital wireless broadcast signal may be affected by topography, objects and weather. This would cause a poor signal quality. Therefore, we strongly suggest you to use a rooftop antenna when received indoors.**
 - 2. This product is moveable but not be suitable of using in a high speed moving environment. Please check other associated products for these requirements.**
 - 3. When you use the function of pre-recording, real time recording, or time shifting, please make sure you have enough hard disk space to save huge recording data.**
 - 4. In order to operate properly, please follow the user manual and suggestive setup. Improper operations may cause the system unstable or crash. Before you remove hard disk devices, please check other related application has been closed.**
- We reserves the right to add or delete the application and its functions; all new release drivers and application will be mentioned in our website. We are not responsible for further notice**

1.2 System Requirements

Recommended OS system (Watching TV and recording)

- P4 1.7 GHz CPU
- 256 MB RAM (minimum), 512 MB RAM recommended
- Sound card for audio
- One free USB2.0 interface
- CD-ROM (install driver & application)
- Windows XP/Vista

1.3 Package Contents

USB Dual DVB-T TV stickx1

RF Converter x1

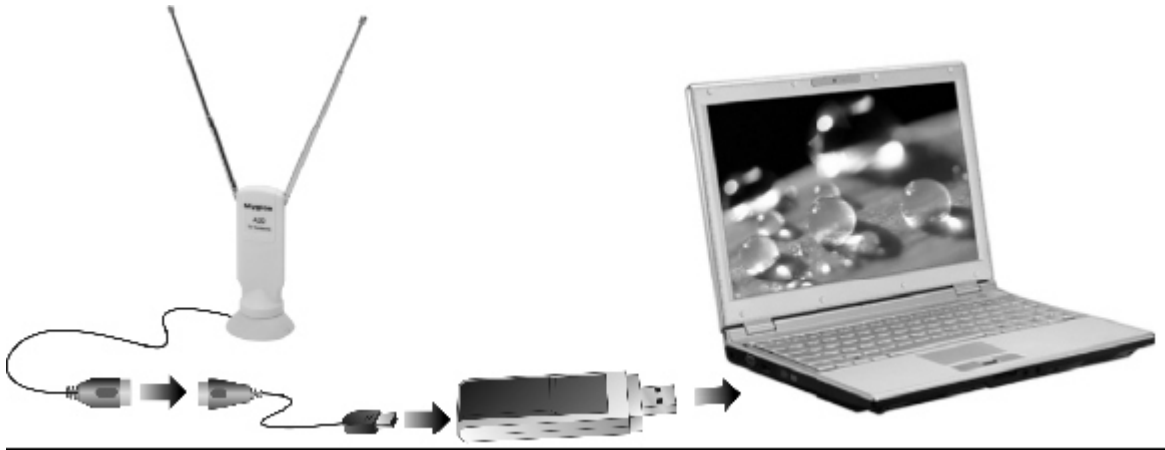
Remote Controll x1

USB Cable (Optional) x1

Quick Installation Guide x1

DVB-T Antenna (Optional) x1

2.1 Hardware Connection



Plug the DVB-T Antenna to PEN DVB-T Stick

Plug the PEN DVB-T Stick to USB port of your laptop/PC

Chapter 3 How to install driver and software

3.1 Driver Installation:

Step1: OS will remind a new hardware-- “**New Hardware Device**” was found. Please choose “**Cancel**”,



Step2: When CD is inserted, OS will guide you to the setup automatically. Click **“Driver Install”** or run **Drivers\ Setup.exe**,

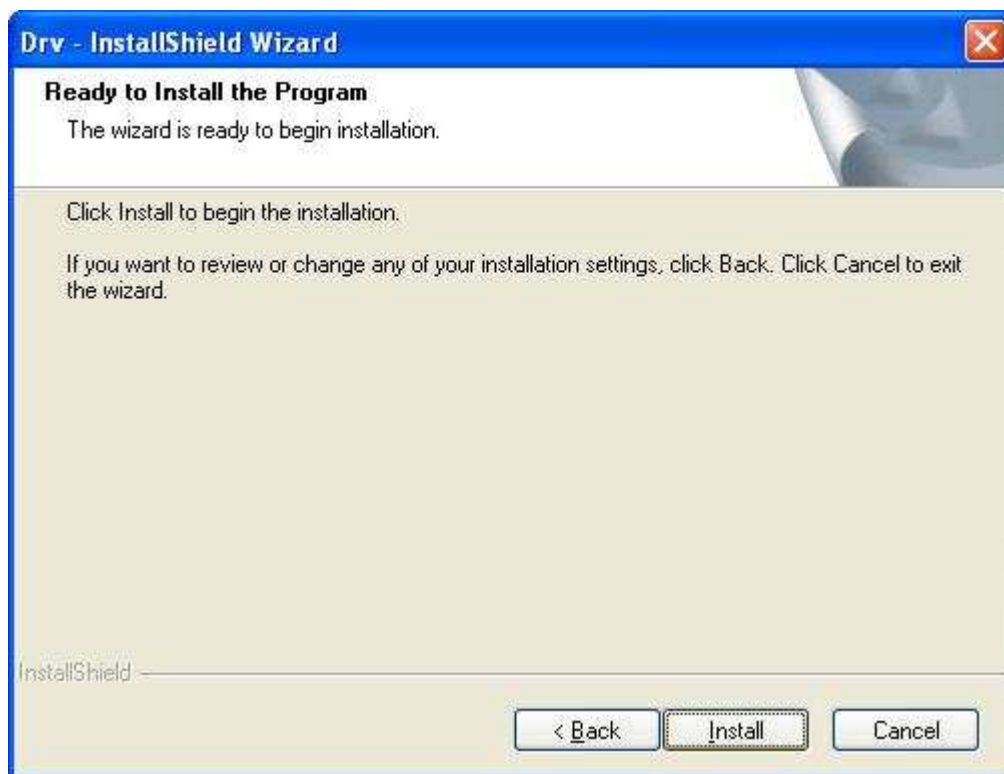


Remark: Please connect hardware device, if not you can't correctly install driver later.

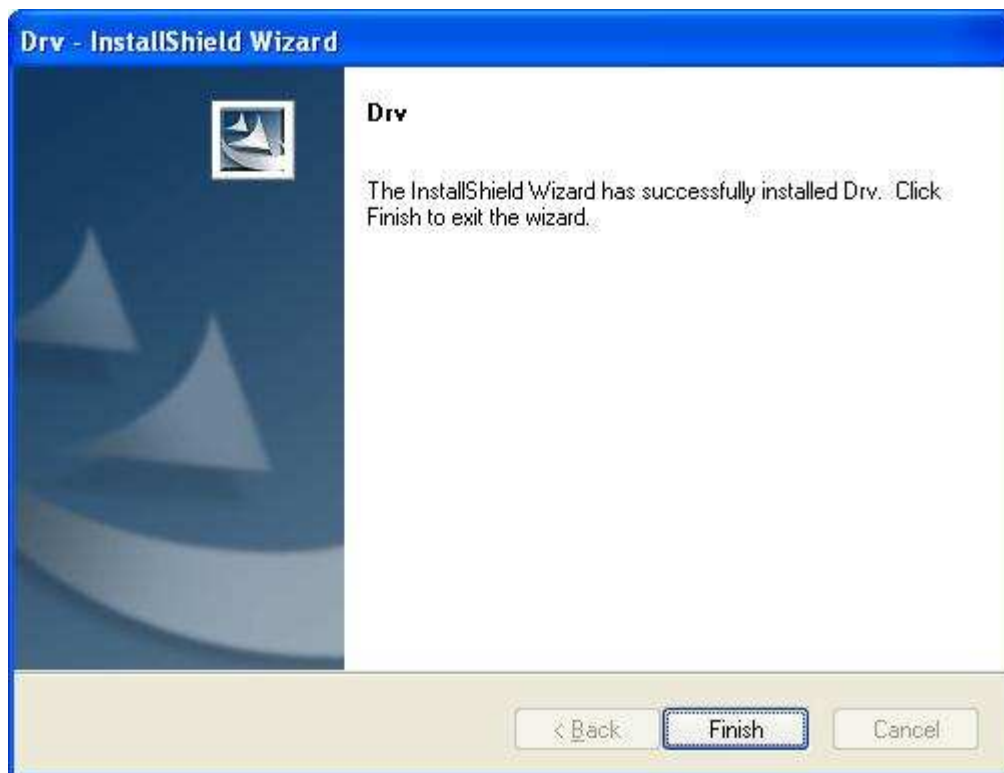
Step5: Click **“Next”** to continue installation



Step6: Click **Install** to begin the installation.



Step7: Click "**Finish**" to completely install the Driver Software.



3.2 Software installation

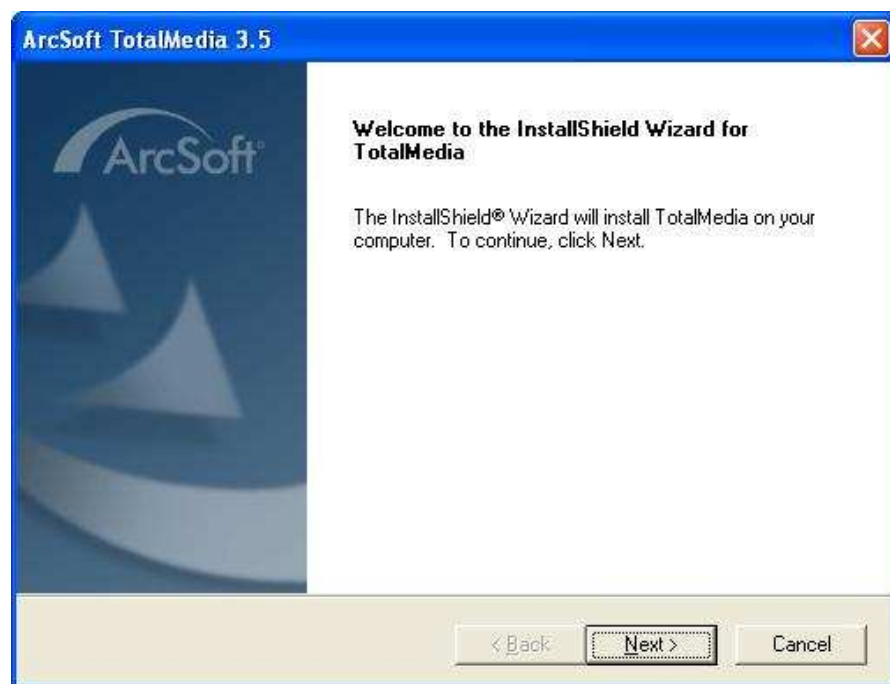
Step8: Click “Sftware Install”.



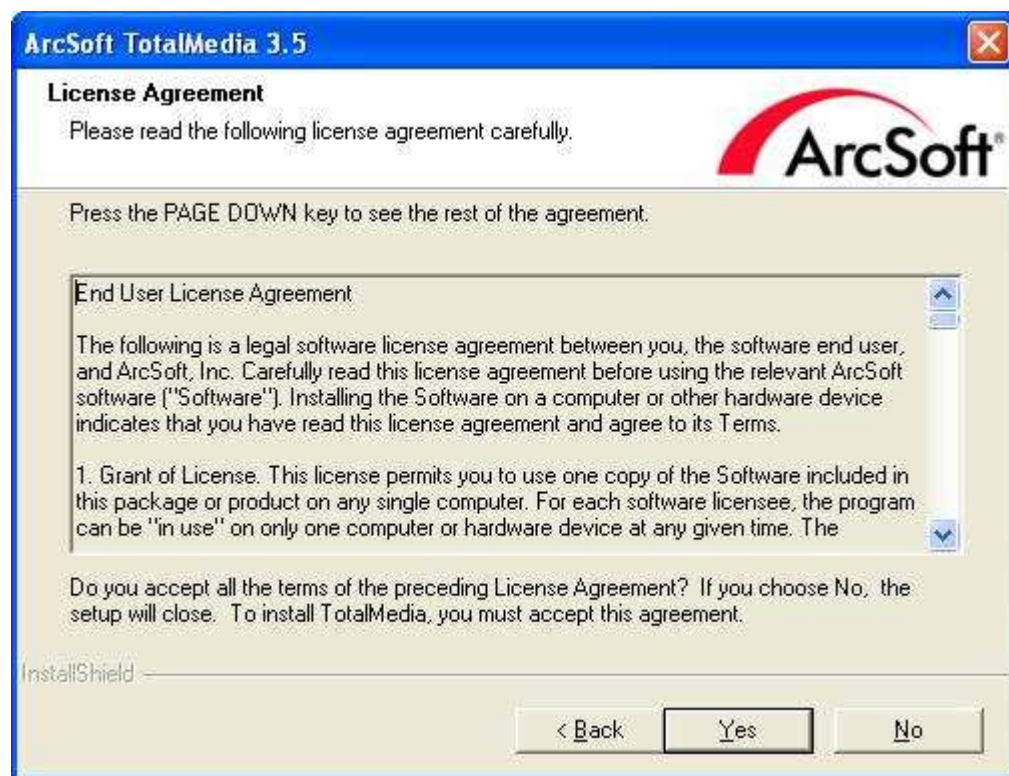
Step9: Installation of Total Media, Choose setup language



Step10: Click **"Next"** to continue installation



Step11: Click **"Yes"** and then it will install **"Arcsoft TotalMedia"**



ArcSoft TotalMedia 3.5

Customer Information
Please enter your information.



User Name:

License Key:


InstallShield

< Back Next > Cancel

Step12: If you want to change the destination folder, please click **"Browse"** and click **"next"** (Recommended is better)

ArcSoft TotalMedia 3.5

Choose Destination Location
Select folder where Setup will install files.



Setup will install TotalMedia in the following folder.
To install to this folder, click Next. To install to a different folder, click Browse and select another folder.

Destination Folder:

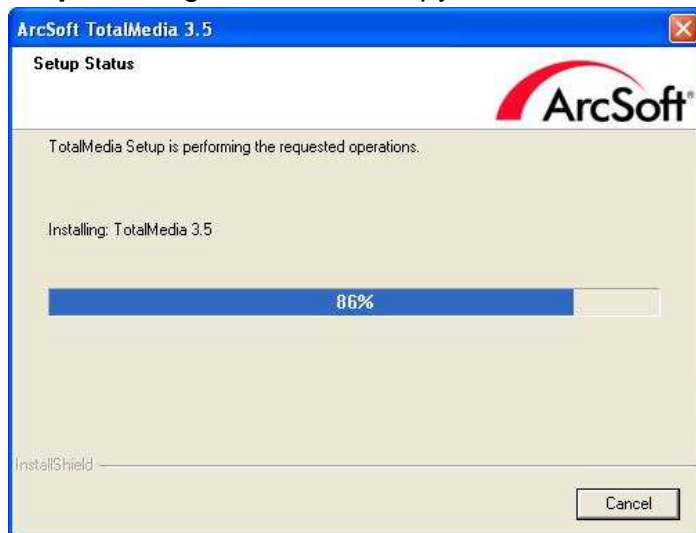
InstallShield

< Back Next > Cancel

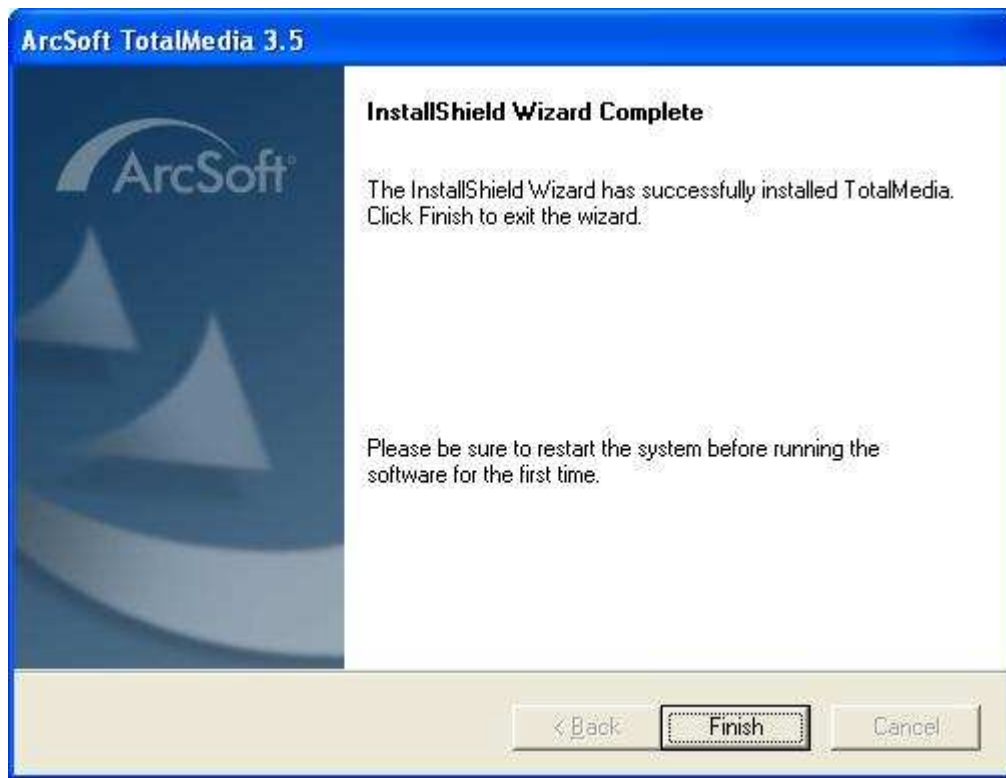
Step13: Please click **“Next”**



Step14: Program starts to copy files.



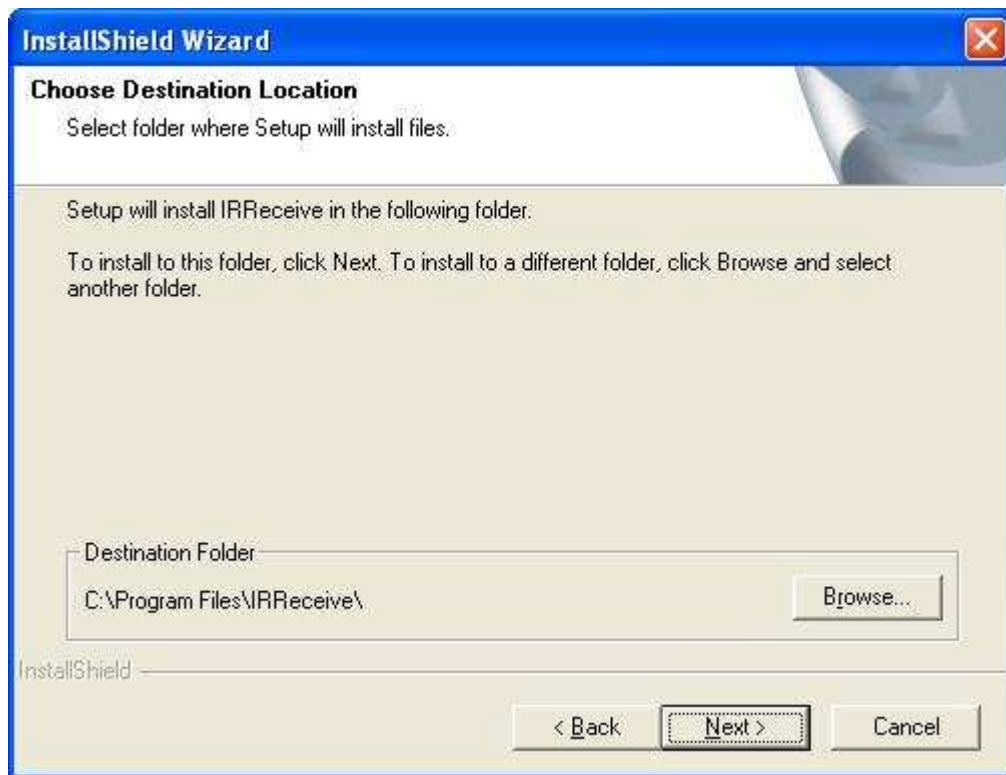
Step15: Click **“Finish”**, the Arcsoft TotalMedia software is installed on your computer.



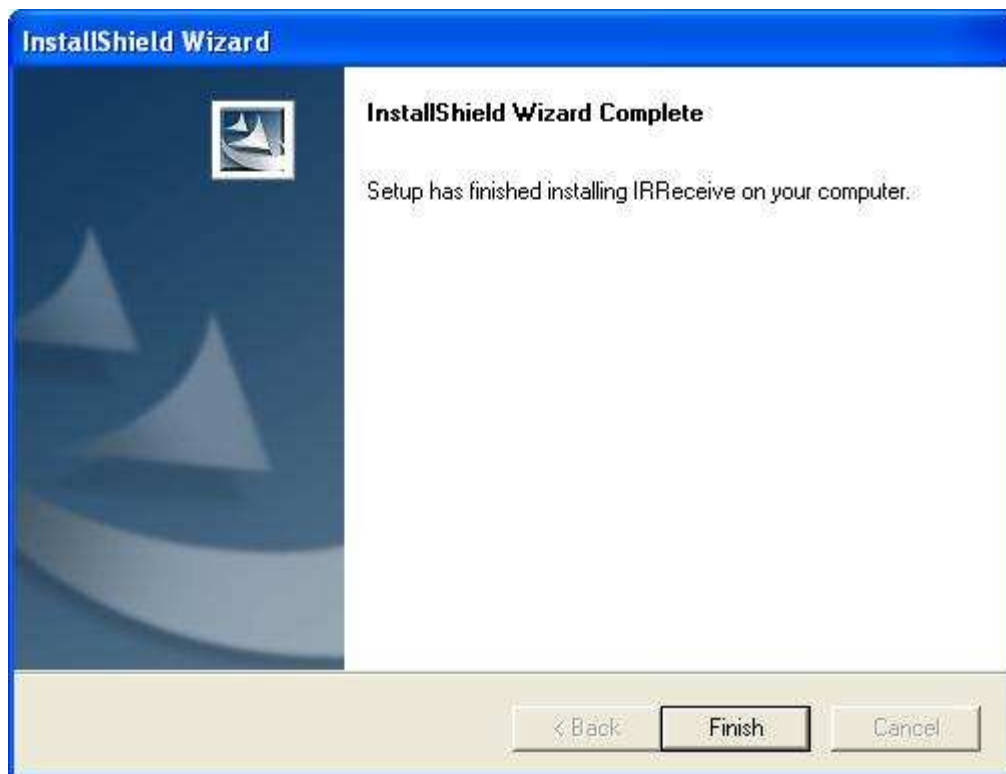
Step16: Click **“Next”** to continue installation **“IR Receive”**



Step17: If you want to change the destination folder, please click **“Browse”** and click **“Next”**
(Recommended is better)



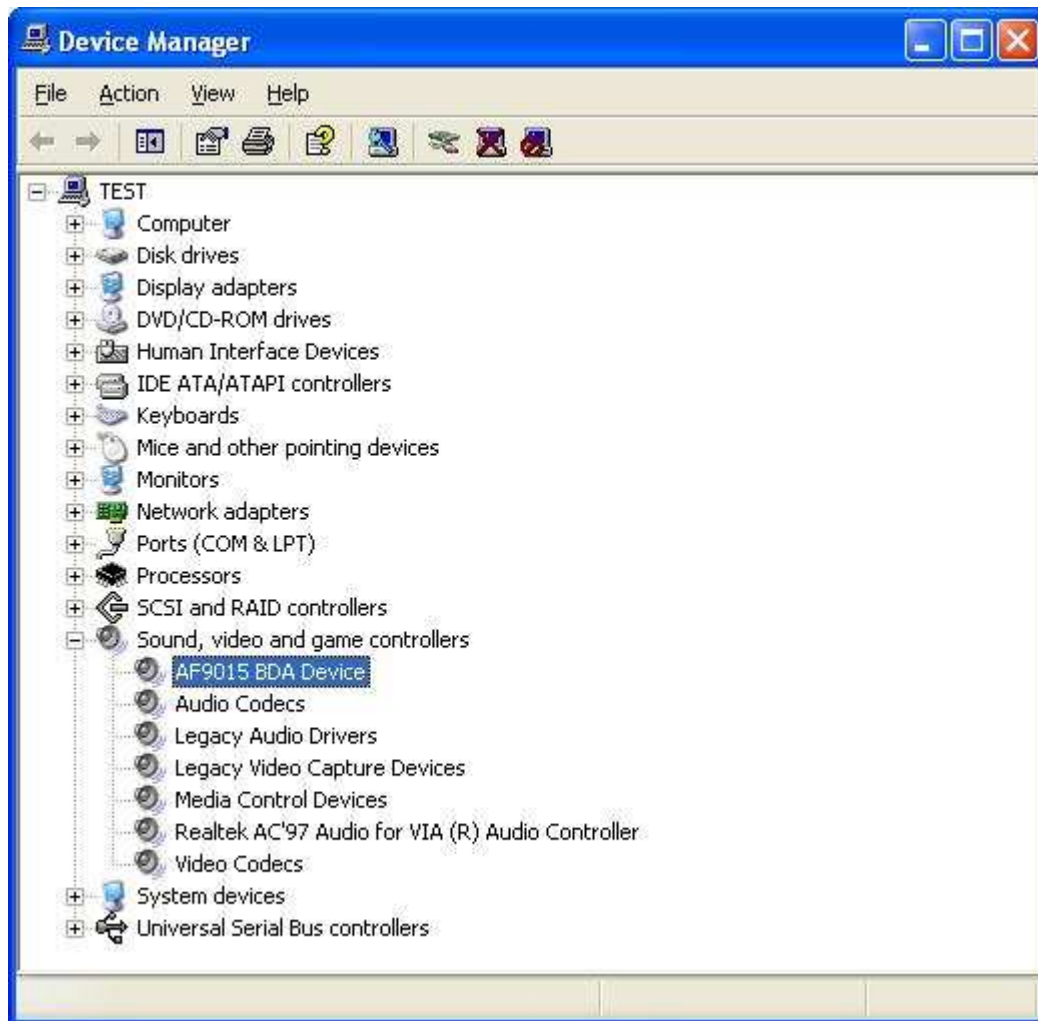
Step18: Click “Finish”, the “IR Receive” software is installed on your computer.



Step19: You will see that DVB-T application icons will appear on your desktop.



Step20: When its finished, please check on Control panel, select “**System**”—“**System properties**”—“**Device Manager**”, you can see three devices which new driver is installed.



Note: After finishing the installation and it did not appear on your Device Manager, please try to re-install the software,

Step14: For more information about TotalMedia, please click “?” on the menu bar for help or visit their website at www.arcsoft.com.

Chapter 4 How to use Remote Control

4.1 Remote Control Button List definition

	1	Power: Turns computer off
	2	TotalMedia: Open/Close TotalMedia Software
	3	Full Screen/Restore: Switches from full screen to the default screen Prev.CH: TV wall function Snapshot: Takes a picture of what is on screen Time-Shift: Time-Shift function Source: Switch between S-Video, Composite, and TV
	4	EPG: Teletext: MTS: Change Audio Track Guide: Help
	5	0 - 9: Channel Number Keys
	6	MUTE: On/Off volume mute
	7	ESC: Return
	8	TV: View and edit TV settings Video: Modify settings for capturing video Music: Picture:
	9、12	VOL-/VOL+: Volume Down/Volume Up
	10、13	CH+/CH-: Channel Up/Channel Down
	11	Up/ Down/ Left/ /Right/ OK
	14	Rec: Record/Stop recording the current program Stop: Stops pre-recorded viewing and returns to live TV Play: Play a recorded program Pause: Pause a program Prev: Up movie clip Rewind: Rewind the current movie clip FF: Forward the current movie clip Next: Next movie clip
	15	Clear: Clear
	16	Enter: Enter
	17	Live TV: Show Favorite Channels
	18	More:

	19	PIP: Open PIP Window Resize: Resize PIP Window Swap: Switch between PIP and Main Window Switch: Switch Programs displayed on the PIP and the Main Window
--	-----------	---

Chapter 5 Frequency Ask Question (FAQ)

1. Can not lock any program channel when auto scan.

1. Please check if there is DVBT broad casting program in your area;
2. Please check if your signal condition is too weak, try to move the antenna around and re-scan again, it is better to move the antenna near the window
3. Please check you connect the antenna and tightly
4. Please check you select right country in the Total Media software scan function page.
5. Please try to use an outdoor antenna and scan once more.

2. I do find some channels,, but this time I get fewer channels than last time

1. Maybe you moved antenna's position or angle, try to find the better position and keep the antenna vertical
2. The weather also can also affect your receiving signal quality, if the weather is bad today, that is the reason
3. In some new start DVBT broadcasting area, the provider of DVBT broadcasting, may change their broadcasting power from day to day, try to find a best power strength.
4. If you put a CAN of cola on the antenna, that will make signal weak, please move them away.

3. When I watch program, Screen blacked out when playing or freezes on first picture.

Unfortunately, you are in a weak signal condition. You can see that from the Yellow light on the top of DVB-T TV STICK. The reason is same as question 2.

4. Video playing but Audio failed

Please check the sound card or the volume setting.

5. Remote control does not work

1. Check remote control batteries.
2. Check remote receiver: the light will be on when receive, that is showing it is getting signal.
3. Check if you are in 5m between the DVB-T TV Stick don't keep to far away.
4. Please point the receive window, that is to say, the angle of the receiving and sending is important

6. Watching TV some time freeze or slow, also audio stroke

1. Please check your PC is not Pentium 3 or 2, DVB-T TV STICK need a high CPU to decoding DVBT stream
2. Please check you VGA driver is properly installed and updated
3. Please don't run another high CPU loading software such as game and CAD.

Infopatika



Distributor: Infopatika Ltd.
Angol str. 38. H-1149 Budapest, Hungary
www.infopatika.hu
Made in China

www.alcอร์ดigital.com