


Infopatika



alcOR



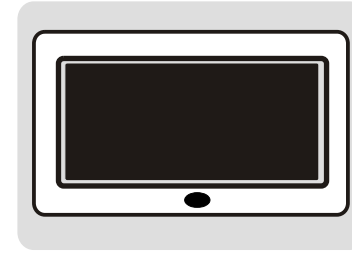
Distributor: Infopatika Ltd.
Angol str. 38. H-1149 Budapest, Hungary
www.infopatika.hu
Made in China
www.alcordingigital.com

Next
User Manual

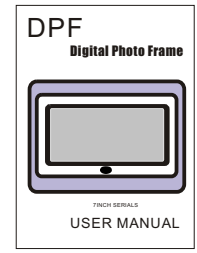
Contents

- SPECIFICATIONS 2
- Features 3
 - Front 4
 - Side 4
 - Back 5
- FUNCTION 6
- REMOTER 16
 - Connect to TV 17
 - What`s in the box 18

What`s in the box



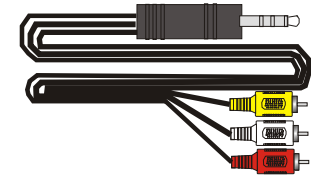
Digital Photo Frame



User Manual



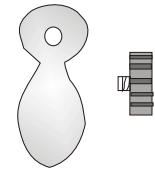
Power Adaptor



TV Cable

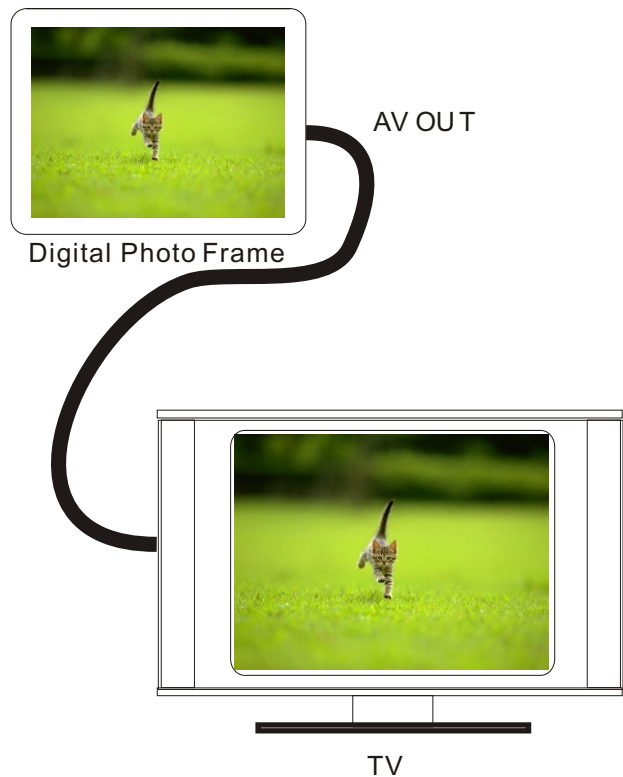


Remote controller



Digital Photo Frame Stand

Connect to TV



When connected to the TV, your digital images will be displayed on your TV screen.

SPECIFICATIONS

- Display: 7 inch TFTLCD
- File format: Audio(MP3)/Photo(JPG)/Video(MPEG1/2/4)
- USB interface connect to computer
- Support HOST USB /SD/MMC/MS/XD/CF card, System detect USB first ,If USB device and card all in system, system read USB device.
- Output Port: One AV(Audio/Video output port)
- Remote Control: Key press control
- Other Function: Slideshow automatically
- Power: DC 5V input /100-240V
- Power Consumption:<9W
- Operation Temperature: -5-40°C
- Operation Humidity:20%-80% relative humi
- Storage Temperature:-15°C-50°C
- Speaker: Speaker inside (2*1W)

Features

- Build-in 16MB,Nor flash,Can copy or delete photos .
- Display the digital photos taken by most digital cameras without a computer.
- View in dividual pictures(JPEG)and slide shows with Mp3 music on the background, supported video MPEG1,MPEG2 and MPEG4(Divx)files.
- Photo supported JPG,Music supported MP2/MP3/WMA Movie supported DAT/MPG/VOB/AVI
- Scrolls through your media card photos at user selected intervals. Automatic slide show with multiple transition effects.
- 7" TFT LCD panel, with 480*234 high resolution, wide visual angle, clear display and rich color.
- Directly insert a compatible memory card into the digital photo frame to show photos, play MP3 music and supported video files.
- Video and audio output jacks, Display photos and slide show on most televisions.
- AC power, no batteries required.
- Multi-language: English, French, German, Italia,Spanish Portuguese, Dutch,Polish.
- NTSC/ PAL. Built-in double audio stereo speakers.

Remote control



10.1 Copy

The item can copy photo files from media to flash.



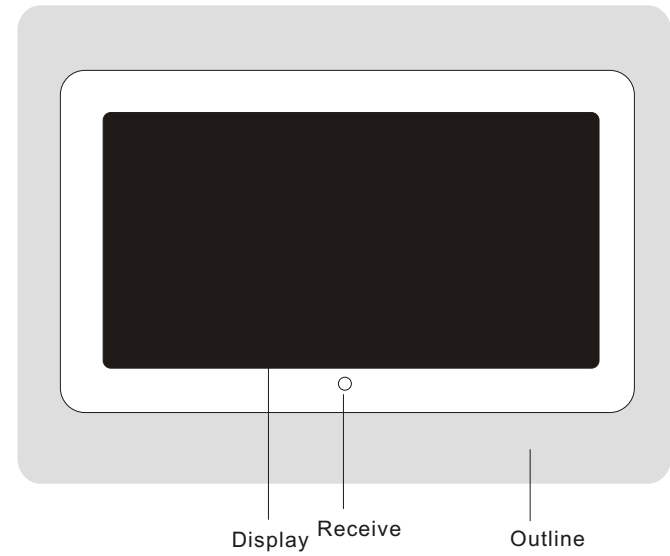
10.2 Delete

The item can delete photo files from flash

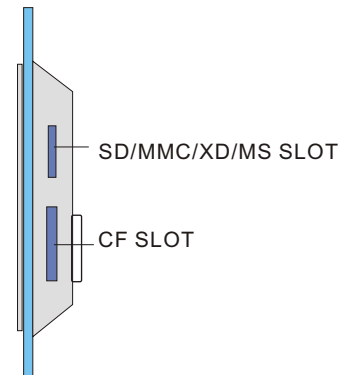


15

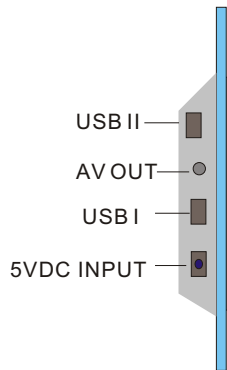
Front



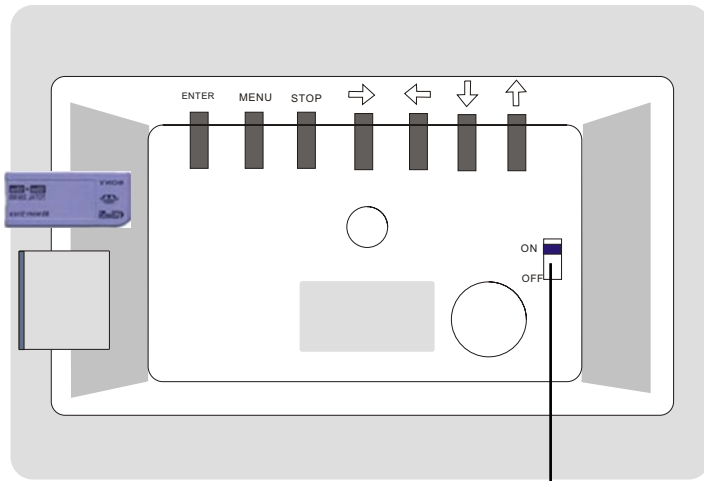
Side



4



BACK



POWER SWITCH

Attention: Use down slot for Compact Flash card or up slot for SD/MMC/MS/XD.

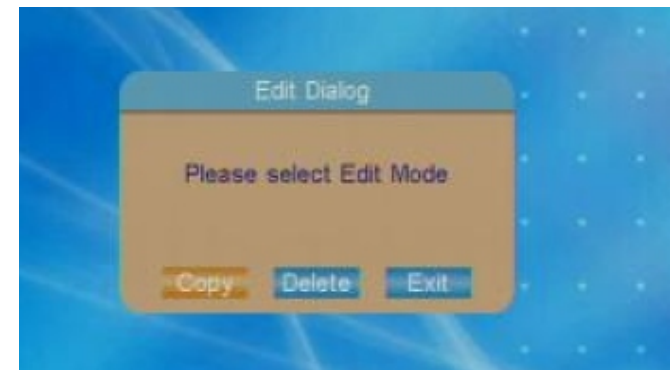
5

- 9. Auto-Power
Select Auto-Power in MENU,press ENTER or PLAY key.
- 9.1 Power on enable
The item enable or disable power on timer



10 Edit

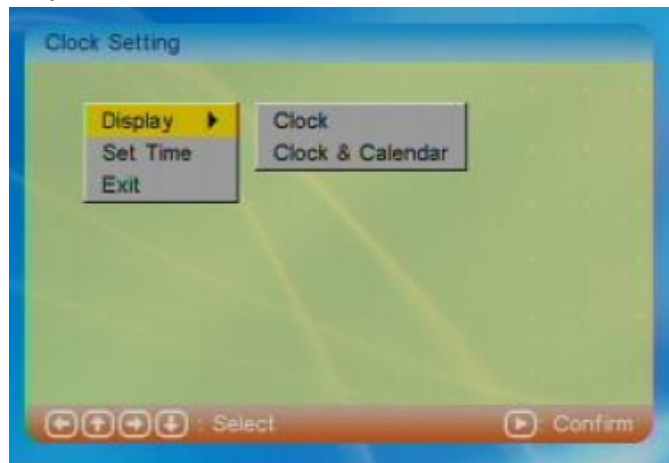
Select EDIT in MENU ,and Press ENTER or PLAY key. In this mode ,user can copy photo from media to build in flash,or delete photo files from build in flash.



14

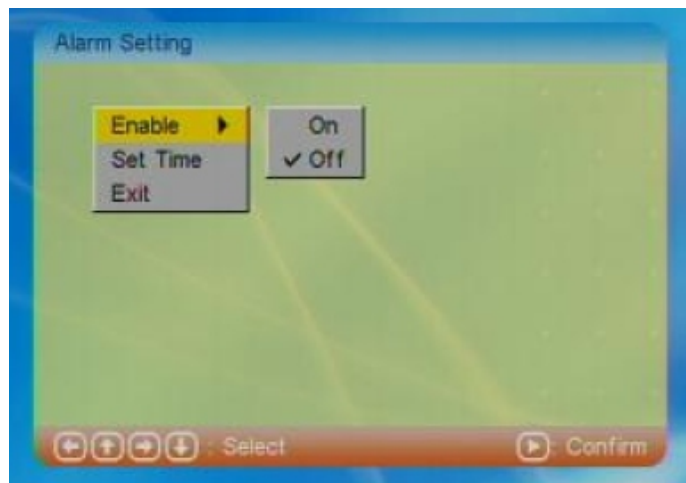
7. CLOCK

Select CLOCK menu in MENU, and press ENTER or Play key



8. Alarm

8.1 Enable Enable or disable alarm



13

FUNCTION

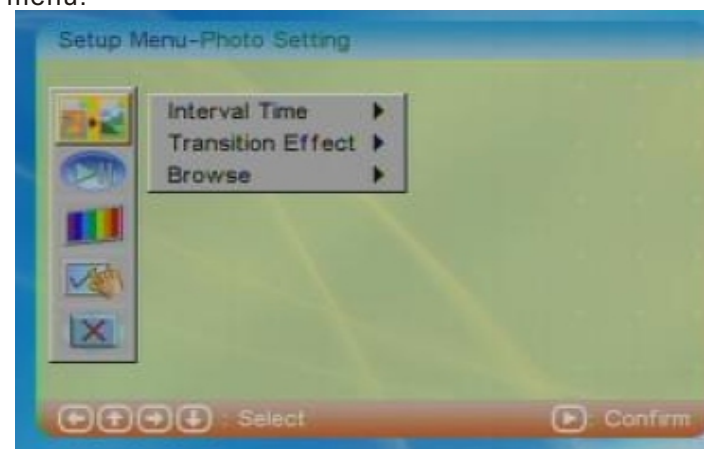
USER can use     Move cursor

To function, then press ENTER or PLAY key, enter function mode.



1.Setup

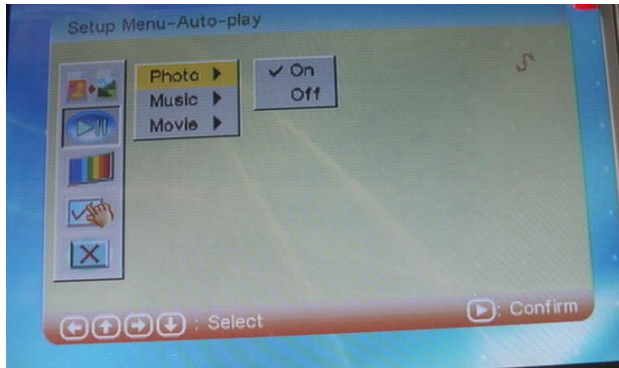
Select Setup in MENU, press ENTER key enter Setup menu.



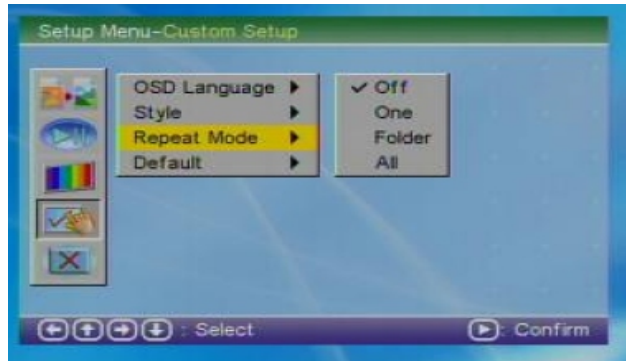
6

1.1 Auto-Play

1.2.1 Photo The item can set PHOTO function Auto-Play ON or Off. If select Off ,enter Thumbnail or File Manager browse photo.



12 Repeat Mode



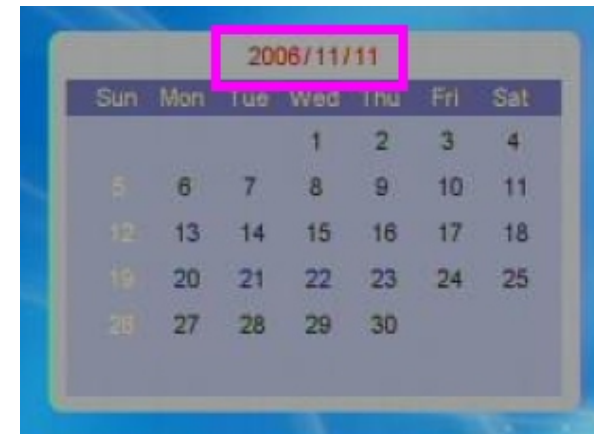
- Off Cance Repeat mode
- One Repeat play the playing one.
- Folder Repeat play all files in current Folder.
- All Repeat play all files in meadia.

6. Calendar

In MENU ,select Calendar menu and press ENTER or Play key system will enter Calendar setup.



If user change Calender,press [Up] [Down] [Left] [Right] Key to day That you want change,If user change year ,press STOP key,the curse will flash in year, press [Left] [Right] Key to want Change date,press [Up] [Down] Key to change the date.



5. MOVIE

In MENU ,select MOVIE menu and press ENTER or Play key system will auto load usb media or card media.If no media connect system,return to MENU.

If media connect system sucess,enter media manage.



If user select Auto-Play ON System enter auto play movie.



11

2 PHOTO

In MENU ,select Photo menu and press ENTER or Play key system will auto load usb media or card media.If no media connect system,return to MENU.

If media connect system sucess,enter media manage.

Thumbnail mode



File manager



8

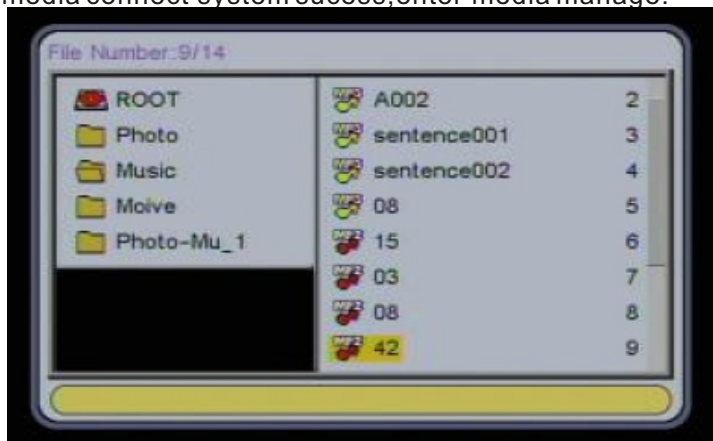
If user select Auto-Play ON System enter auto play photo.



3 MUSIC

In MENU ,select MUSIC menu and press ENTER or Play key system will auto load usb media or card media.If no media connect system,return to MENU.

If media connect system sucess,enter media manage.



9

If user select Auto-Play ON System enter auto play music.



4 Photo+Music

In MENU ,select PHOTO+MUSIC menu and press ENTER or Play key system will auto load usb media or card media.If no media connect system,return to MENU.

If media connect system sucess,enter slide show



10