

# galcor



## *Lux*

# **User Manual**

## Contents

Precautions.....	03
Characteristics.....	04
About the Player.....	05
Screen Description.....	06
Basic Operation.....	07
System Menu.....	08
Listen to Music.....	10
Resources Manager.....	11
Picture Browse/FM.....	12
E-Book.....	13
Game Function.....	14
USB Disk.....	15
Transfer and Play Video File.....	16
Upgrade Player Driver.....	18
Troubleshooting.....	20
Specifications.....	21

This manual contains important safe measurements and correct operational information, so please read all the information carefully before you use the device in order to avoid any unexpected accidents.

- Do not put the player in the condition of high temperature, humidity or dust.
- Do not put the player in high temperature place (over 40°C), especially not in the cars with window closed in summer.
- Do not knock or hit the player, especially do not shake TFT screen in order to avoid TFT being damaged or displayed abnormally.
- Select suitable volume, turn down or stop use when you feel tingle in ears.  
Battery service life may be various from different using conditions, manufacturer and manufacturing time.
- Do not disconnect the player abruptly during the formatting or uploading and downloading, otherwise, it will cause the program error.
- We will not be responsible for any obligation for any memory loss caused by product damage, repair or other reasons. Please operate correctly as per the manual.
- The player, no matter is powered on or not, once connected with the USB port of started computer, can be charged.
- Do not dismantle the player personally or use alcohol, thinner or benzene to clean the surface of the player.
- Do not use the player in the electronics-prohibited area, such as in the plane.
- Do not use the player when driving or walking in order to avoid traffic accidents.
- Please charge in the following conditions:
  - A. Battery electricity icon displays no electricity.
  - B. Further power on the player when the system is powered off automatically, but it powers off soon.
  - C. No response with the pressing keys.

※Our Company reserves the right for the improvement of the product. It is subject to any change on the specifications and designs without further notice!

2.8-inch 260K full-color TFT display

Multi music formats as MP3, WMA, APE, FLAC and WAV, good timber and real audio frequency display

MPEG-4 video format play, full-screen play display, exterior-sound speaker play

High-definition JPEG picture browse function

Built-in hi-fi 8 Ohm speaker

Digital record

Energy-saving setting, brightness adjustable, customerized power off time

Good timber, support 3D EQ surrounding effect, customerized EQ

Support multi languages

USB2.0 ultra-high speed transmission as 5M/S

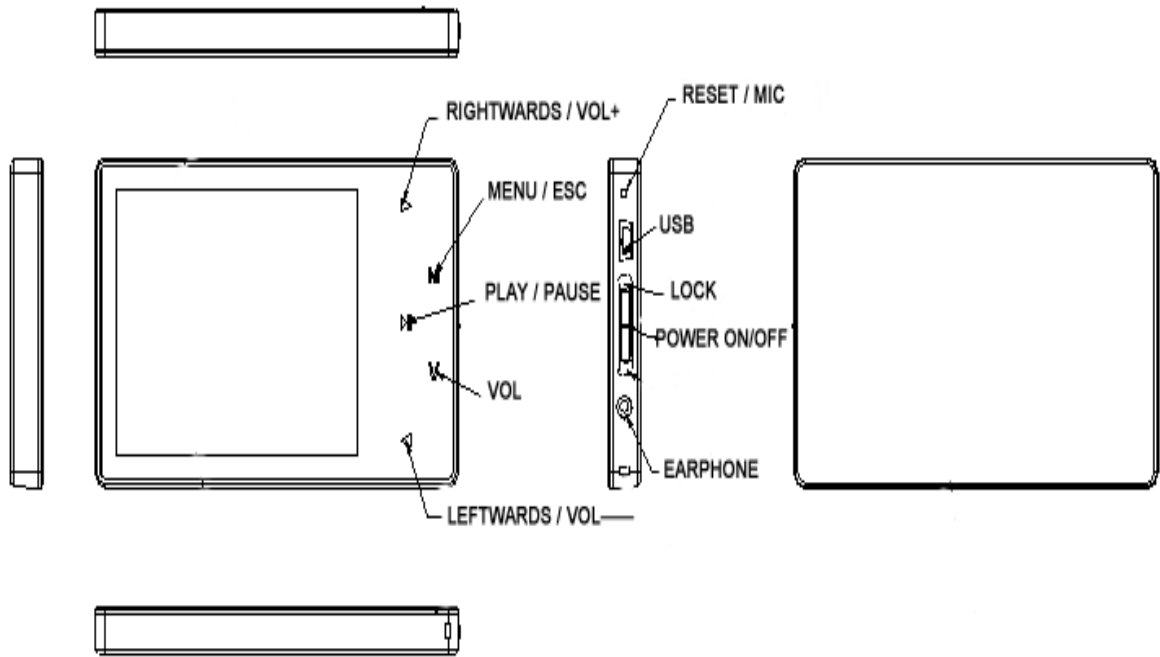
Listen to music while reading E-book, with bookmark function

Listen to music while playing games

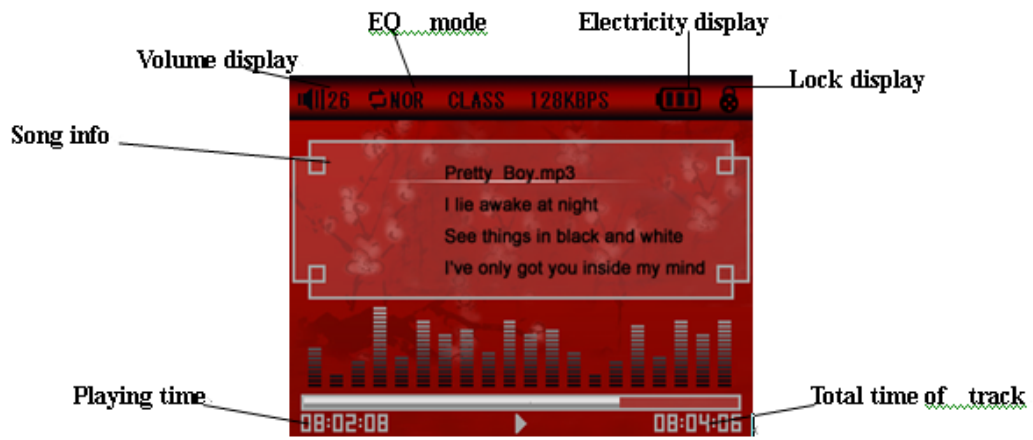
Support g-sensor

Portable U-disk function, support Firmware Upgrade

A-B repeat function



■ Music Play



■ REC Mode



■ Video Play



### ■ Power On/Off

Power On:

Push the power key switch to ON position, long press the key down for 3 seconds, the player will display the Boot interface and enter the working mode before the Normal Power Off.

Power Off:

- In Play state: short press "M" to pause, long press the power key down for 3 seconds, to power off.
- In other modes: long press the power key down for 3 seconds, to power off.
- The system will power off automatically if the battery is not enough.

### ■ Hold On/Off

In Video, Music or REC state, you can set the Hold as On to avoid the unexpected operation.

Hold On: Short press "H" key to lock the player automatically.

Hold Off: Short press "H" key to unlock the player automatically.

### ■ Power Reset

If your player is blocked during the using, you can push [ON/OFF] power switch to restart the player.

### ■ Connect to Computer and Data File Transmission

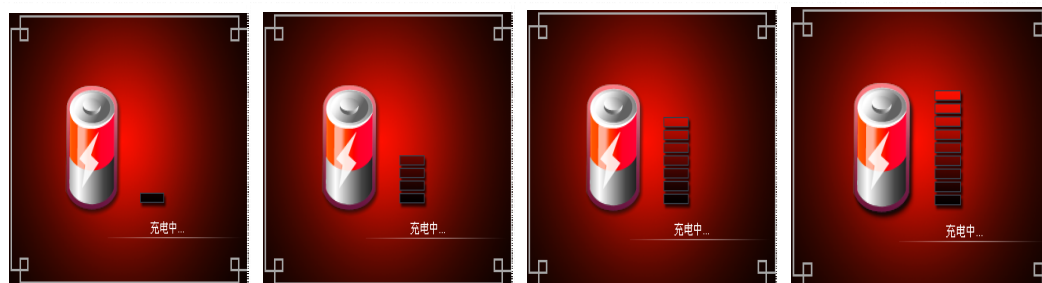
After starting the computer, you can connect the player to computer via USB cable to achieve the USB power supply or USB data transmission. When the player is connected to the computer via USB port, it can be used as a U disk. It requires you only to drag your favorite music or data into MP3 instead of any 3<sup>rd</sup> procedure.

### ■ Volume Control

you should short press "V", when Speakers voice in flash, press ◀ and ▶ to adjust the volume.

### ■ Battery

This player adopts built-in lithium batteries of high capacity.



The usable time of battery electricity may be various according to different volume, type of playing file and pressing operation. The player can save battery as per the set [Customerized Power Off Time] or [Display Setting].

### ■ Main Interface

After entering the Main Interface, select your desired option among [Music ]/[Video ]/[FM ]/[Photo]/[Text]/[Record]/[Navigation]/[Game]/[Setting] circularly by pushing “◀/▶”, and short press the [M] key to enter the option menu, long press [M] key to exit the submenu and return to Main Interface



### ■ Setup

In Main Interface, push “◀/▶” to select [Settings] option, short press[M]key to enter Setting interface (shown in right bottom), and select the sub-option to be set by pushing ◀ or ▶

### Music Play

#### ● Display Setup

①Backlight time: six options of 5 sec., 10 sec., 15 sec., 20 sec., 30 sec., and always on.

②Lum: five options of +1, +2, +3, +4 and +5, the higher level, the more bright.

③Backlight mode: two options of Normal and Electricity-saving modes.

#### ● System Setup

Four sub-options: Language, about, Upgrade and Default set.

①Language Selection: three options of Simplified Chinese, Traditional Chinese and English

②About: player storage memory, remain memory and system software version no., these information are read-only, short press [M] key to exit.

③Firmware Upgrading

Eject out the dialog box in this menu, it reminds you whether to upgrade the firmware, it will exit if no firmware upgrading.

⑤Defaulted Set

In this menu, eject out the dialog box, confirm whether to resume the defaulted value, select “Yes” or “No”.

#### ● Auto Power Off Time


In this menu, there are six options of Power: Off, 3 min., 5 min., 10 min., 15 min. and 20 min.



- Format

In this menu, eject out the dialog box, confirm whether to format the player, select “Yes” or “No”.


- Play/Stop/Pause

In Music Play menu, connect the earphone with player, select the desired song file by pushing “◀/▶”key, then short press [M] key to begin the playing, then short press  key to pause, operate it circularly. During the playing of music, the interface has real audio frequency display, e.g., for the file with LRC file, behind the frequency is the Synchronous Lyric.

- Lyric Display

The player only supports the Lyric Synchronous Display that the file shares the same name as LRC file of MP3 format, e.g., music file is named as “Angel.mp3”, the LRC file must be named as “Angel.Lrc”, what’s more, they have to be in the same directory.

- Music Play Setting Menu

In Music Play state, long press [M] key to enter Main Menu and enter the “Music” in “Settings” option, there are multi options, push ◀ or ▶ key to shift to the desired setup menu. After your selection, press  key to confirm.



- A-B Repeat function

In Music Play state, Short press the “V” key of the loudspeaker in flash, short press the "M" to begin the repeat, A will display on the screen; Short press the "M" key 2 times, to the end of repetition, showed that the state 'A-B', the player will repeat between the beginning point and the ending point.; short by the “V” key speakers to stop flashing, and withdraw from the repetition model;

## 1. Repeat Mode

- a. Once            Stop after playing all the songs in each directory
- b. Repeat 1       Repeat playing a single song.
- c. Folder once    Play all the songs in the folder.
- d. All once        Play randomly the songs in the current folder.
- e. All repeat     Repeatedly play all the songs.
- f. Intro            Play all the songs of the first 10 seconds in the current folder.

## 2. EQ Setup

Normal/3D/Rock/Pop/Classic/bass/Jazz/User EQ, the above eight options will bring you different music effects; also, you can edit your favorite EQ effect by [User EQ set] option. The operation is done by leftwards, rightwards,   keys.

## 3. play mode

order

shuffle

## ■ Voice REC

In Main Interface, enter Record state, Pull the power key downward to start recording, Pull the power key downward again to pause the record, long pull down the power key or short press "M" key to save the recorded file and enter next Record preparation state. Long press [M] key to save the record and exit the REC mode.



## ■ REC Setup

In Stop state of REC mode, long press [M] key to exit the Main interface, and enter [Record] option, adjust the settings among [REC Quality]/[REC Volume]/[CHECK SW].

1. REC Quality: high quality, common quality (the first one has larger REC file and better effect; the second one is in the opposite)
2. REC Volume: five options of +1, +2, +3, +4 and +5. The higher level, the larger recorded volume.

\*The recorded voice files can be found in Music Play menu and played to try the effect.

\*If the screen displays "Full Space", it indicates that there is no space for new recorded file, please delete other files to release more space.

**■ Resources Manager**

Resources manager is one of the function characteristics, it can make you know the inside file type, structure and contents more clearly, for convenient management and search of the file content in classifications.

Note:

**■ Delete File**

In Resources Manager, you can select music or video files, long press  $\checkmark$  key to display delete Dialog box, select “Yes” to delete and “No” to cancel. After the selection, short press [M] key to implement the selected option.

### ■ JPEG Browser

In Main Interface, short press [M] key to confirm to enter Picture Browse mode

Push ◀ and ▶ key to select the previous or next picture.

### ■ FM

Enter FM menu,.Press Mode key to select: Manu,Auto,Mem,Pres,Del

Manu:Short press [M] Key to confirm, press leftwards or rightwards to change the frequent manually, long press [M] to exit.

Auto: Press [M]to enter, the player will automatically search, after search will display:pres CH XX, Press leftwards or rightwards to select the station.

Mem: press[M]key to enter, press ◀ or ▶ to select the stations, press [M]to confirm store, the frequent display on screen will replace the frequent that stored before. First Short press MENU to exit mem,then long press MENU to return FM menu. pres: Pres[M] key to enter, press leftwards or rightwards select the stations that stored in the player.

Del: press[M] key to enter, press ◀ or ▶ t to select the station that you want to delete, press [M] the confirm, after delete the station's frequent will display "empty", First Short press[M] to exit mem,then long press[M] to return FM menu.

FM record :

When you listen the FM music, Pull the power key downward to start recording, Pull the power key downward again to pause the record, long pull down the power key or short press"M" key to save the recorded file and enter next Record preparation state. Long press [M] key to save the record and exit the REC mode.

l

### Note:

In FM mode, the earphone is using as antenna, so please keeping the earphone is connected well.




**■ Download TXT File**

Connect the player to computer, select the desired file to download and save the file as TXT format in portable disk.


**■ Read File**

In Main Interface, enter Text option, push ◀ or ▶ key to select the desired file to read, then short press[M] to read. Turn pages by pushing“◀/▶”.

- Built-in Intellectual Game: Fighting Space, Tank, Pirates of the Caribbean

In System Menu, enter Game mode, short press  key to enter Game Setup Interface.

- Keys Description

Enter Game Setup Interface., short press  key to shift between Quit and Pause functions, press "◀/▶" to move up /left move down/right . short press MENU to deathblow.. Long press "M" to exit

- Balance ulnar

Use a balance ulnar tests loom placed perspective

- Craps

- Kalman

Calculated steps and consumption of calories

### ■ USB Display Mode

The player has a high-speed USB2.0 port with the transmission speed of 5M/S, and is a standard USB disk, supports the systems including Windows98 (it needs to install the driver), over Windows2K (it's unnecessary to install the driver), Mac OS 10.3 and over, Linux Redhat 8.0 and over. It supports USB power supply and can be played without battery. After connecting to the PC (several seconds later), the player will display the On-line mode shown



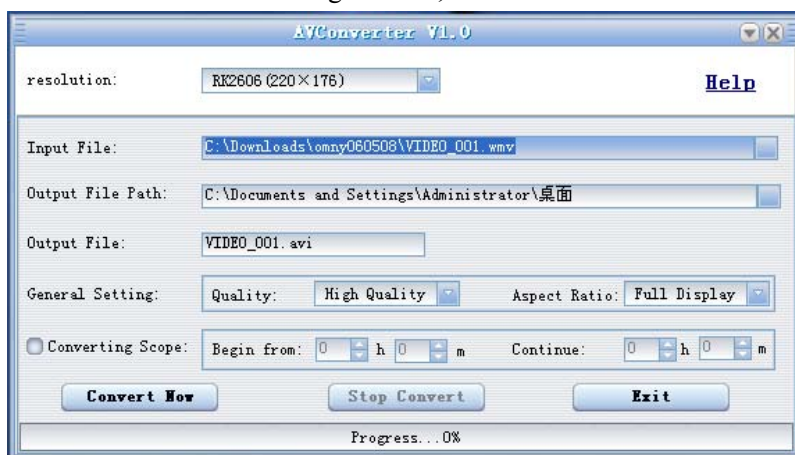
### ■ Charge Display Mode

If the battery is too low, the display will show "Low battery to power off", then the player will be powered off automatically. You can use the attached charger to charge the battery. During the charging, the battery icon will display the impulse, after the charging, the battery electricity will show full grids (Fig.). It requires 4 hours to charge fully the battery (note: for the first two times, you have to charge for 8 hours).

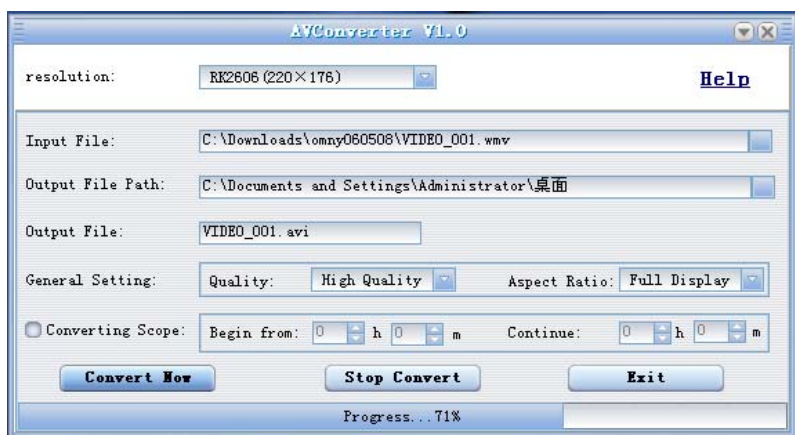


This player can convert the WMV, RM, AVI, VOB or DAT into AVI video format via the attached video convert software.

1. Click and run the program of “AV Converter.exe”, select your desired video/audio file and AVI video file routine to be generated, shown as follows:



2. Select and set your desired parameters, click [Start to Convert] button, then begin to convert to AVI file.



The successfully converted AVI video file can be played in MP4 player. During the operation,

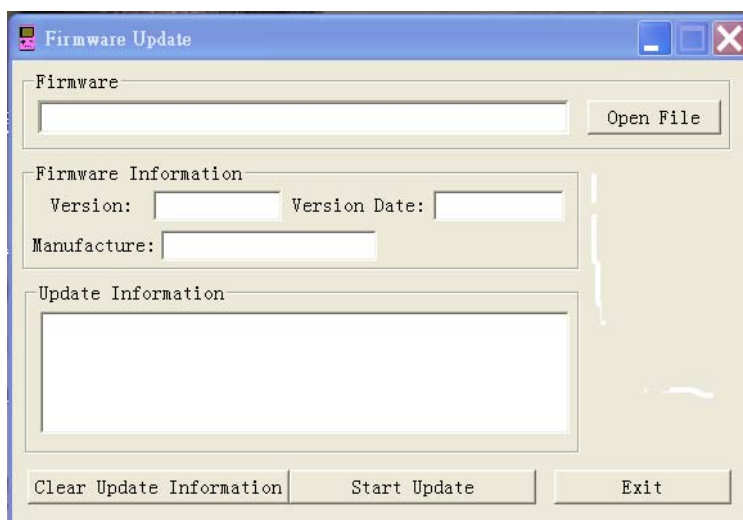
3. enter Video Play menu, select the corresponding file, short press [MODE] key to play in video, long press to exit (the Video Play interface refers to the Screen Description).



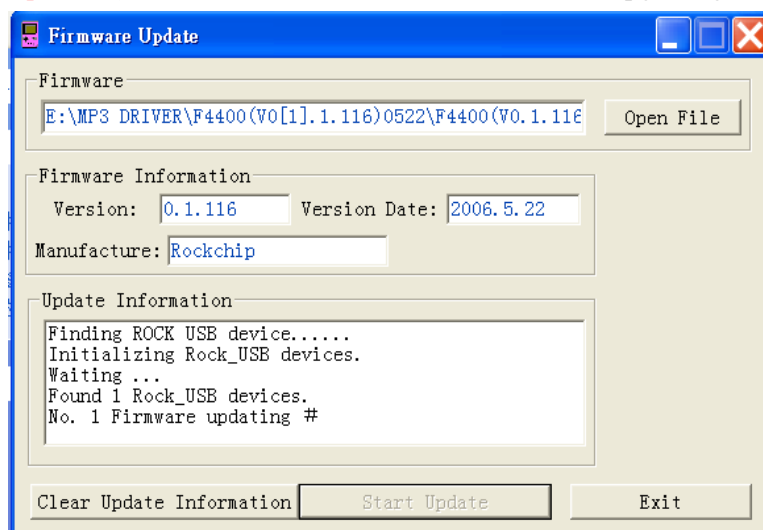


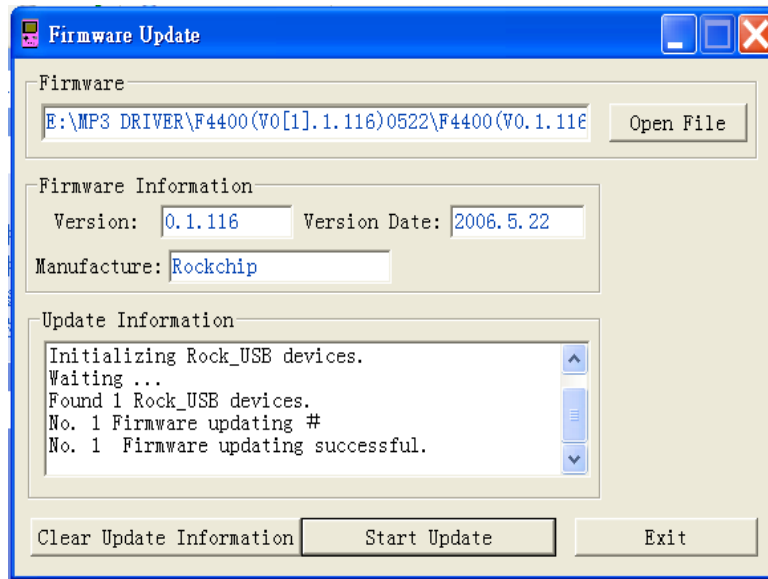
The player can upgrade or resume the damaged player driver via the tool software in the attached disk.

1. For the first upgrading of computer, insert the drive disk into the CD-ROM of computer, then connect the MP4 player with computer (it **requires you to press and hold the Leftwards key**), till it appears the program Installation Interface.
2. Implement the next step according to the Dialog box prompt, and select the “Upgrading Tool” folder in the attached disk in the “Browse” option of the fourth Dialog box, then click Confirm.
4. Operate as per the prompt in dialog box till the accomplishment
5. When the installation of programs required by computer is OK, you can begin the upgrading; select and run the firmware upgrading tool Consumer.exe (can be found in attached disk), then open the option and select Rock2\*.rfl file (the Interface is as follows).



6. Connect the player to PC via USB cable (**press and hold the Leftwards key before the On-line operation**), then click [Burnt Firmware] till the Auto Upgrading is achieved .





Note: Firmware upgrade is to improve and optimize the performance of the player. The normal work of the player would not be affected even if the firmware isn't upgraded. The wrong operation of upgrading firmware would cause the device not to work normally! The firmware upgrade software of this player is not applied to other series of players.

If the player can not be played normally, please check as follows:

Troubles	Causes
It cannot be turned on	Check whether the player is powered on or not and whether the machine program is damaged or not
The player is blocked	Push the power switch to restart the player
It can not be played	Check whether the machine is powered on or not Confirm the volume is not in “0” level, check the earphone is connected well and keep the earphone clean Format the disk again
It can not upload/download the file or the disk can not be found in computer	Insert USB cable totally well after the Power on. Correctly install the driver again.
It can not be recorded	Check the enough memory and the electricity
Words on display are deformed	Make sure that you have selected the correct language
It can not be used normally after upgrading	Upgrade again in Windows 2000

Screen	dot matrix (320*240) 262K color 2.8"	
Dimension	88(length)×55 (width) ×7.9(height)	
Connection Speed	USB2.0 (HIGH SPEED)	
Build-in Memory	high speed flash memory: 2GB/4GB/8G (optional)	
Power supply	polymer lithium battery 540mAh	
	Shut off the screen and play MP3 up to 10 hours	
Record	Sampling Frequency	8KHz/16KHz
	Record Format	WMA (32kbps, 64 kbps)
	Record Time	14.30 hours (8GB)
MP3、WMA、	Earphone's Max Output	(L) 4mW+ (R) 4mW (32Ohm)
	MP3 Bit Rate	8K bps – 448K bps
	WMA Bit Rate	5K bps – 192K bps
	FR	20Hz~20KHz
	SNR	88dB
	Degree of Distortion	0.6%
FM Radio	Frequency Range	76MHz~90MHz/87.5MHz~ 108MHz
	Preservation No.	30
	Earphone's Max Output	(L) 4mW+ (R) 4mW (32Ohm)
	SNR	45dB
Music Format	MP1、MP2、MP3、WMA、WAV、APE、FLAC	
Service Temperature	-5 ~40°C	
Language	Simple Chinese, Traditional Chinese, English and so on	
System Requirement	Windows98/SE/ME/2K/XP	

Note: the specification and design shall be subject to change without any further notice!

# **Infopatika**



**Distributor: Infopatika Ltd.**

**Angol str. 38. H-1149 Budapest, Hungary**

**[www.infopatika.hu](http://www.infopatika.hu)**

**Made in China**

**[www.alcordigital.com](http://www.alcordigital.com)**